



*Specialising in water quality
measuring instruments*

Servicing your Probe

Visual Appearance

Visual check of all sensors



D.O. Sensor

- Clean
- No bubbles
- No wrinkles
- No Holes



D.O. Sensor
Does this sensor need maintenance?



Conductivity Sensor

Black coating or contaminated with organic matter
Do not clean
If dirty or damaged,
Return for service





**Conductivity
Sensor
Needs cleaning
or re-platinizing**



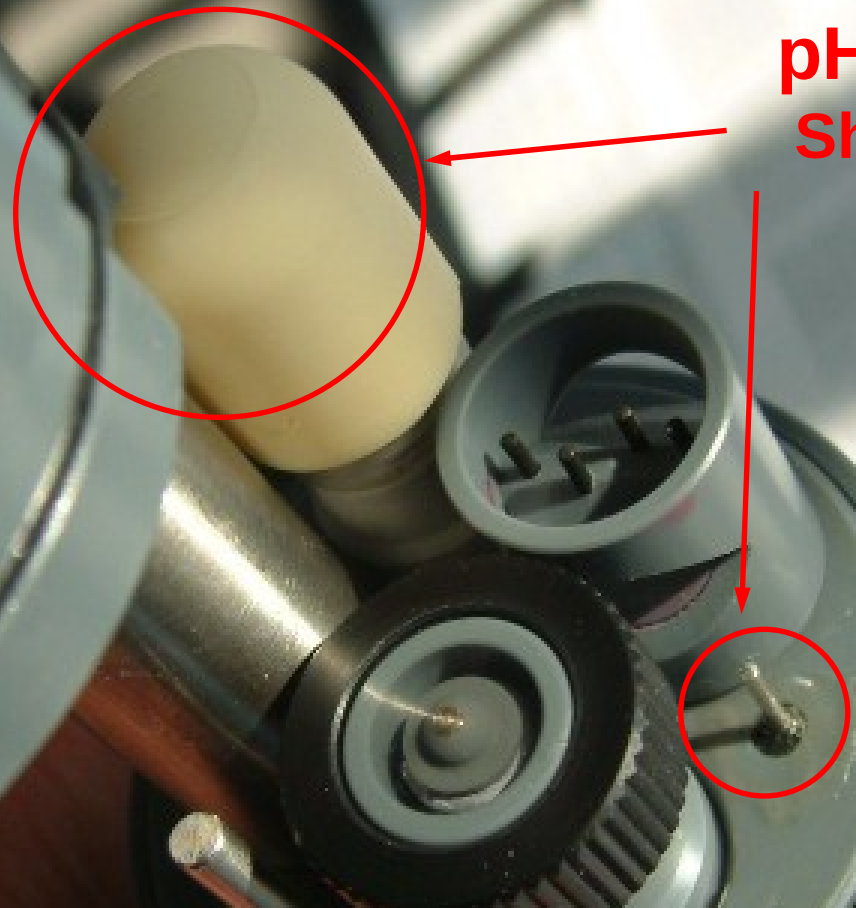


**Operational
Conductivity
Sensor**
Note black coating



**Bare Metal
Conductivity
Sensor**
Needs platinizing

**pH/ORP Sensor
Shared reference**



**ORP Sensor
Must be clean
for accurate
results**

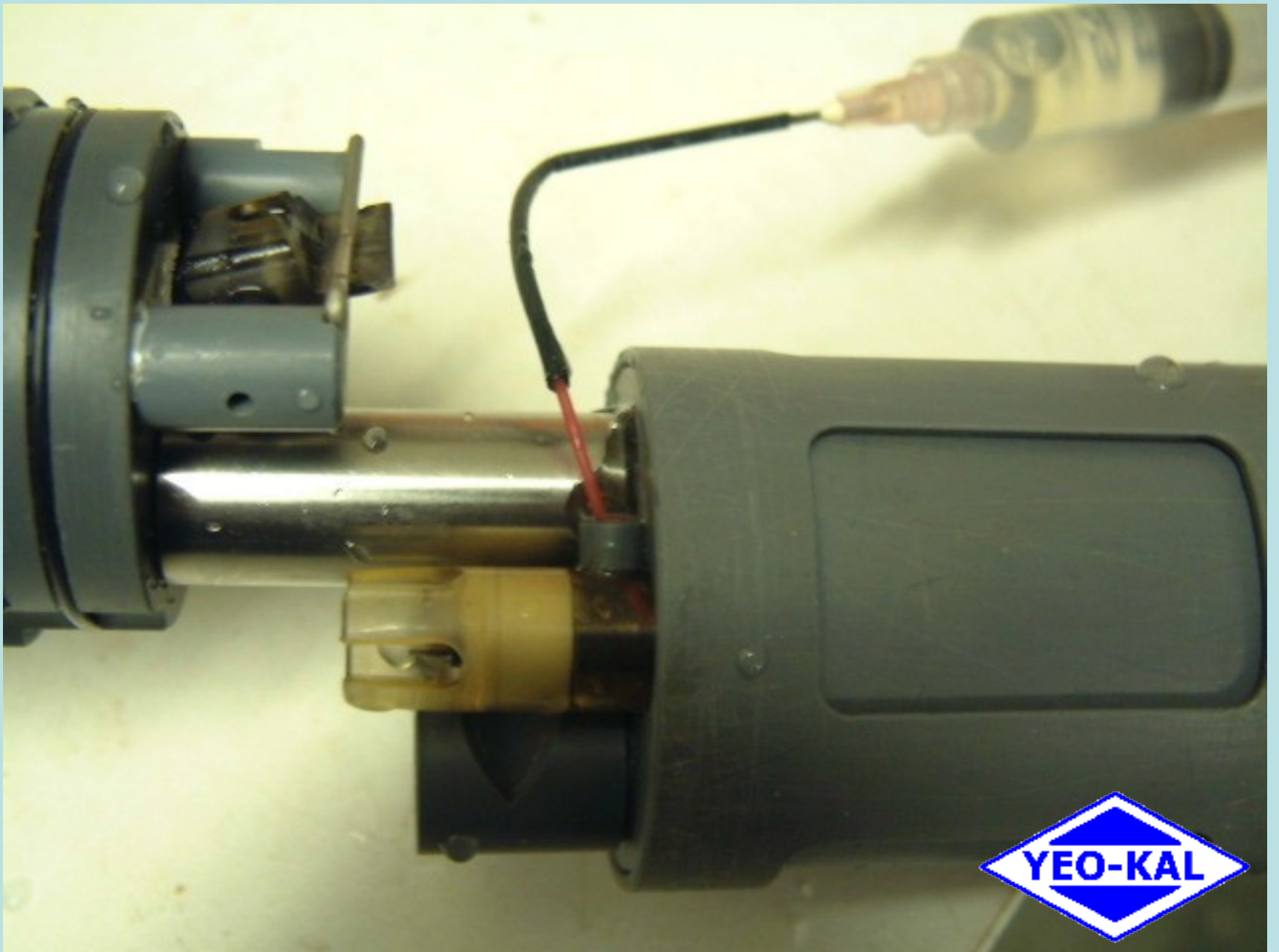


Temperature Sensor
No maintenance required



**pH/ORP Sensor
Shared reference
Old style with
electrolyte side
filler**





**New style plug-in pH
Sensor. Double
junction with
replaceable porous
teflon™ junction**



New style plug-in pH Sensor

**Double junction with
replaceable porous teflon™
junction**



Empty pH socket. Remove any moisture before replacing pH sensor



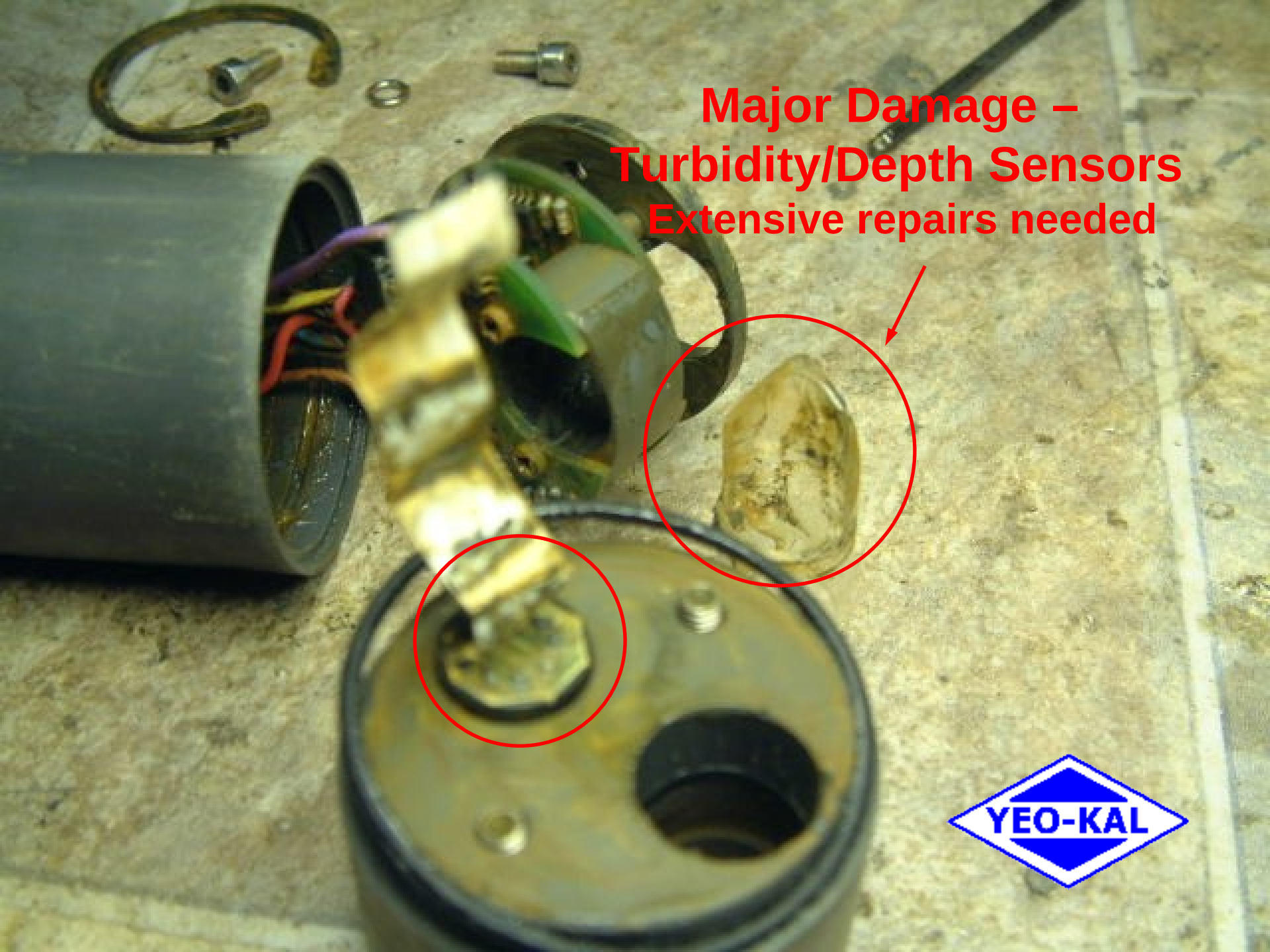
Depth sensor



**Turbidity sensor
showing glass tube**



**Major Damage –
Turbidity/Depth Sensors
Extensive repairs needed**



Unexpected Results



Quality Control – testing procedures



Calibration

What is needed?

- Temperature must be calibrated
- Fresh calibration standard solutions
- Follow instructions in manual also available from www.yeokal.com.au.

